



**The Clatterbridge  
Cancer Centre**  
NHS Foundation Trust

Clatterbridge Road  
Bebington  
Wirral  
CH63 4JY

Tel: 0151 556 5000  
Web: [www.clatterbridgecc.nhs.uk](http://www.clatterbridgecc.nhs.uk)

Date: 24 September 2019

**Re: Freedom of Information Request**  
**Ref: 239 - 2019**

Thank you for your email dated the 28<sup>th</sup> August 2019, requesting a full management structure chart.

The information that you require is as follows:

**Please see Appendix 1 below for Corporate Structure Chart and Appendix 2 for list of Corporate Structure Names**

Should you require any further information please do not hesitate to contact me on the email address provided below.

Please remember to quote the reference number above in any future communications.

If you are dissatisfied with the handling of your request, you have the right to ask for this to be investigated internally.

If you are dissatisfied with the information you have received, you have the right to ask for an internal review.

Both processes will be handled in accordance with our Trust's Freedom of Information Policy and the Freedom of Information Act 2000.

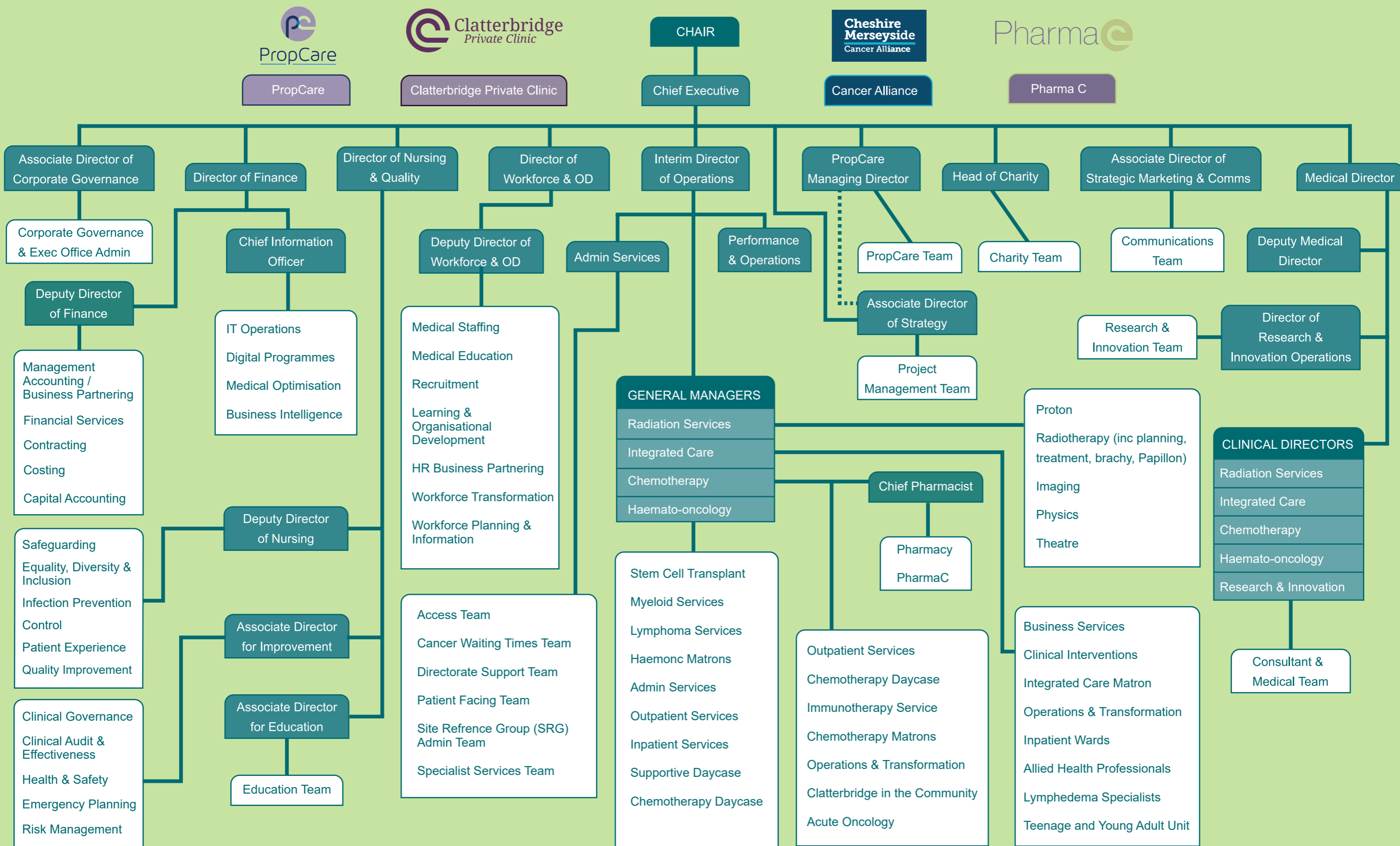
Internal investigation and internal review requests should be submitted within two months of the date of receipt of the response to your original letter and should be addressed to: Freedom of Information Review, The Clatterbridge Cancer Centre NHS Foundation Trust, Clatterbridge Road, Bebington, Wirral, CH63 4JY

If you are not satisfied with the outcome of the internal investigation/review, you have the right to apply directly to the Information Commissioner for a decision.

The Information Commissioner can be contacted at: Information Commissioner's Office, Wycliffe House, Water Lane, Wilmslow, Cheshire, SK9 5AF.



# Corporate Structure



## **Appendix 2**

**Chair** – Kathy Doran

**Chief Executive** – Liz Bishop

**Associate Director of Corporate Governance** – Angela Wendzicha

**Director of Finance** – James Thomson

**Director of Nursing and Quality** – Sheila Lloyd

**Director of Workforce and Organisational Development** – Jayne Shaw

**Interim Director of Operations** – Joan Spencer

**PropCare Managing Director** – Fiona Jones

**Head of Charity** – Katrina Bury

**Associate Director of Strategic Marketing and Communications** – Alexa Traynor

**Medical Director** – Sheena Khanduri

**Deputy Director of Finance** – John Andrews

**Deputy Director of Workforce and Organisational Development** – Jenny Grant

**Deputy Medical Director** – Dr. Ernie Marshall

**Director of Research and Innovation Operations** – Gillian Heap

**Associate Director of Strategy** – Tom Pharoah

**Deputy Director of Nursing** – Karen Kay

**Associate Director for Improvement** – Gill Murphy

**Associate Director for Education** – Kate Greaves

**Chief Pharmacist** – Helen Poulter-Clark

### **General Managers**

**Radiation Services** – Julie Massey

**Integrated Care** – Tabettha Darmon

**Chemotherapy** – Fran Yip

**Haemato-oncology** – Liz Furmedge

### **Clinical Directors**

**Radiation Services** – Dr Chinnamani Eswar

**Integrated Care** – Dr Caroline Brammer

**Chemotherapy** – Dr Rosie Lord

**Haemato-oncology** – Dr Rahuman Salim